

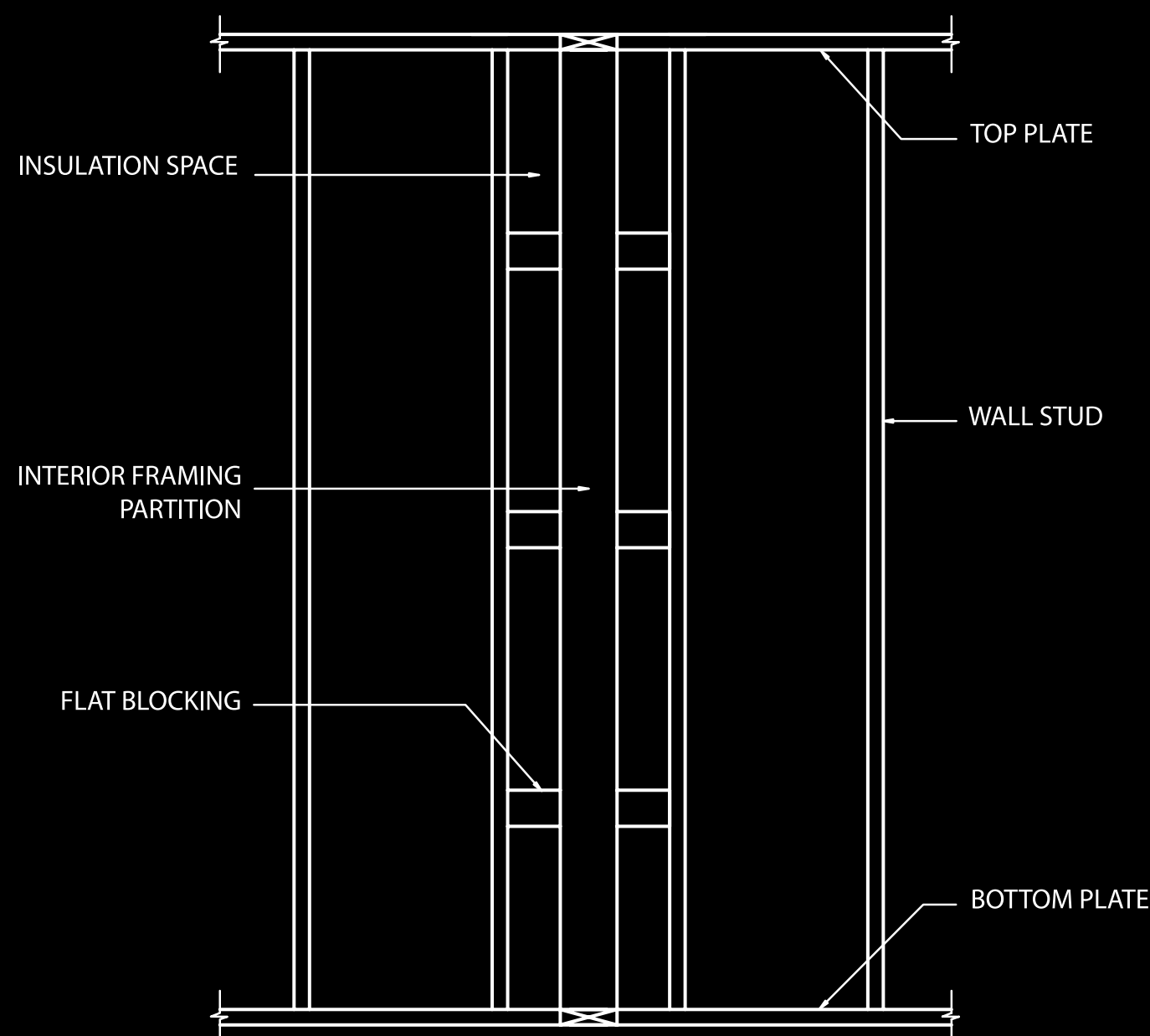


ADVANCED FRAMING TECHNIQUE TWO-STUD CORNER *and* LADDER BLOCKING

Only two studs are needed to create a building corner in most parts of the country (outside seismic and high-wind zones). However, three studs are often used to provide a surface for nailing drywall. Framing with two-stud corners saves framing lumber and allows more insulation at the building's corner. Special clips, called drywall clips, or scrap wood nailers can be used for attaching drywall.

Ladder blocking, used at intersection of interior and exterior walls, provides a nailing base while allowing space for continuous insulation in the exterior wall behind the ladder framing. Ladder blocking not only saves lumber, but can often make use of scrap lumber.

Ladder Blocking



Ladder blocking technique conserves lumber and creates a space for continuous insulation behind partition wall intersections.