



L-Shaped Header

Field Guide



NORTH AMERICAN
STEEL FRAMING
ALLIANCE

North American Steel Framing Alliance
1726 M Street, NW
Suite 601
Washington, DC 20036-4523
202-785-2022
Fax: 202-785-3856
1-800-79-STEEL
www.SteelFramingAlliance.com

Publication NT19-99F

First Printing—December 1999
Copyright 1999

Introduction

This publication was developed by Nader R. Elhaji, P.E., for the North American Steel Framing Alliance (NASFA). It is intended to provide span tables and construction details for L-shaped headers in residential and light commercial construction. In the production of this publication, due diligence has been exercised in consulting a wide range of pertinent authorities and experiences. Efforts have been made to present accurate, reliable and useful information. NASFA acknowledges the principal author of this publication, Nader Elhaji, and reviewers. Special appreciation is extended to Kevin Bielat of NASFA for his assistance and guidance.

The materials set forth herein are for general information only. They are not a substitute for competent professional assistance. Application of this information to a specific project or setting should be reviewed by a qualified individual. NASFA believes that the information contained in this publication substantially represents industry practice and related scientific and technical information, but the information is not intended to represent an official position of NASFA or to restrict or exclude any other construction or design technique. Anyone making use of the information set forth herein does so at his or her own risk and assumes any resulting liability.

Table of Contents

| | |
|-------------------------------|----|
| Introduction | i |
| Table of Contents | i |
| List of Figures | i |
| List of Tables | i |
| Overview | 1 |
| Scope | 2 |
| L-Header Identification | 2 |
| Span Tables | 2 |
| Construction Details | 3 |
| References | 17 |

List of Figures

| | | |
|----------|--|---|
| Figure 1 | L-Shaped Header Configuration | 1 |
| Figure 2 | Rough Opening | 3 |
| Figure 3 | Framing of Rough Opening | 4 |
| Figure 4 | Installation of a Double L-Shaped Header | 4 |

List of Tables

| | | |
|---------|--|---|
| Table 1 | L-Header Dimension | 5 |
| Table 2 | Applicability Limits | 6 |
| Table 3 | Double L-Header Span Table—Headers Supporting Roof and Ceiling Only 24-Foot-Wide Building | 7 |
| Table 4 | Double L-Header Span Table—Headers Supporting Roof and Ceiling Only 28-Foot-Wide Building | 7 |

| | |
|----------|---|
| Table 5 | Double L-Header Span Table—Headers Supporting Roof and Ceiling Only 30-Foot-Wide Building8 |
| Table 6 | Double L-Header Span Table—Headers Supporting Roof and Ceiling Only 32-Foot-Wide Building8 |
| Table 7 | Double L-Header Span Table—Headers Supporting Roof and Ceiling Only 34-Foot-Wide Building9 |
| Table 8 | Double L-Header Span Table—Headers Supporting Roof and Ceiling Only 36-Foot-Wide Building9 |
| Table 9 | Double L-Header Span Table—Headers Supporting Roof and Ceiling Only 38-Foot-Wide Building10 |
| Table 10 | Double L-Header Span Table—Headers Supporting Roof and Ceiling Only 40-Foot-Wide Building10 |
| Table 11 | Double L-Header Span Table—Headers Supporting One Floor, Roof, and Ceiling 24-Foot-Wide Building11 |
| Table 12 | Double L-Header Span Table—Headers Supporting One Floor, Roof, and Ceiling 28-Foot-Wide Building11 |
| Table 13 | Double L-Header Span Table—Headers Supporting One Floor, Roof, and Ceiling 30-Foot-Wide Building12 |
| Table 14 | Double L-Header Span Table—Headers Supporting One Floor, Roof, and Ceiling 32-Foot-Wide Building12 |
| Table 15 | Double L-Header Span Table—Headers Supporting One Floor, Roof, and Ceiling 34-Foot-Wide Building13 |
| Table 16 | Double L-Header Span Table—Headers Supporting One Floor, Roof, and Ceiling 36-Foot-Wide Building13 |
| Table 17 | Double L-Header Span Table—Headers Supporting One Floor, Roof, and Ceiling 38-Foot-Wide Building14 |
| Table 18 | Double L-Header Span Table—Headers Supporting One Floor, Roof, and Ceiling 40-Foot-Wide Building14 |
| Table 19 | Double L-Header Uplift Span Table—Headers Supporting Roof and Ceiling Only 24-Foot-Wide Building15 |
| Table 20 | Double L-Header Uplift Span Table—Headers Supporting Roof and Ceiling Only 28-Foot-Wide Building15 |
| Table 21 | Double L-Header Uplift Span Table—Headers Supporting Roof and Ceiling Only 32-Foot-Wide Building16 |
| Table 22 | Double L-Header Uplift Span Table—Headers Supporting Roof and Ceiling Only 36-Foot-Wide Building16 |
| Table 23 | Double L-Header Uplift Span Table—Headers Supporting Roof and Ceiling Only 40-Foot-Wide Building17 |

Overview

This publication provides construction details and span tables for double L-headers with varied sizes and thickness. As the name suggests, the main component of an L-shaped header is a piece of cold-formed steel formed into a shape resembling the letter L. An L-header consists of a cold-formed steel angle with one short leg lapping over the top track of the wall and one leg extending down the side of the wall above window or door openings as shown in Figure 1. Each angle is fastened to the top track above an opening with minimum #8 screws spaced at 12-inches on center. The “L” angle is placed on both sides of the wall opening to form a double angle L-shaped header (double L-header).

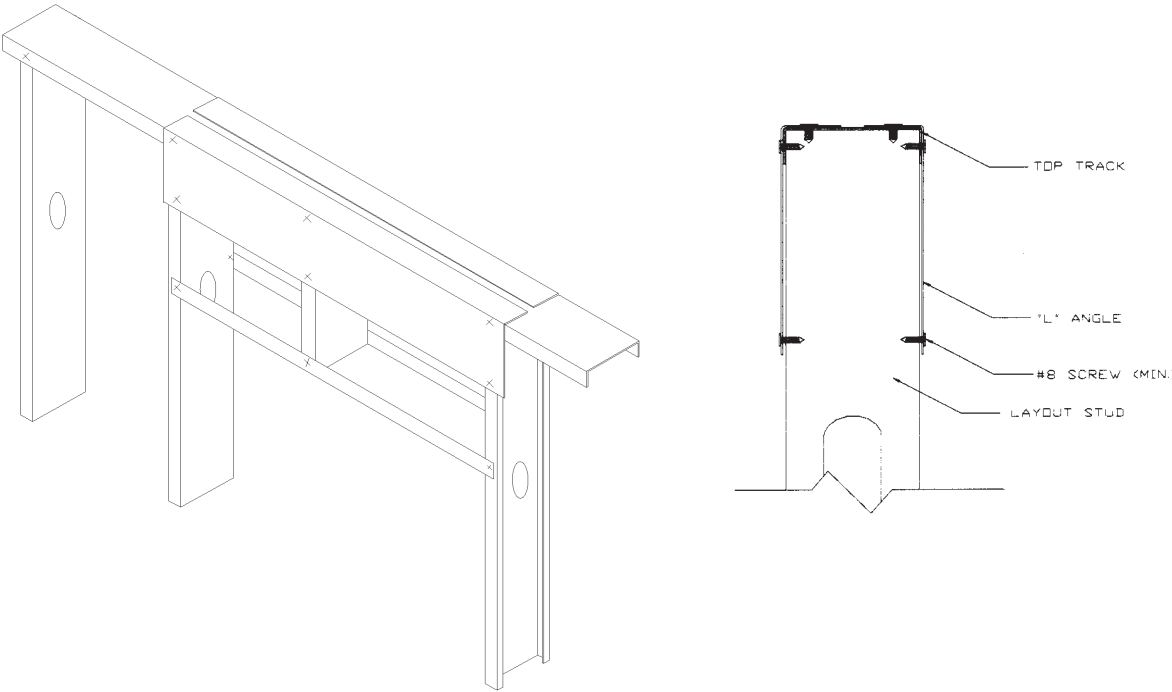


Figure 1
L-Shaped Header Configuration

Scope

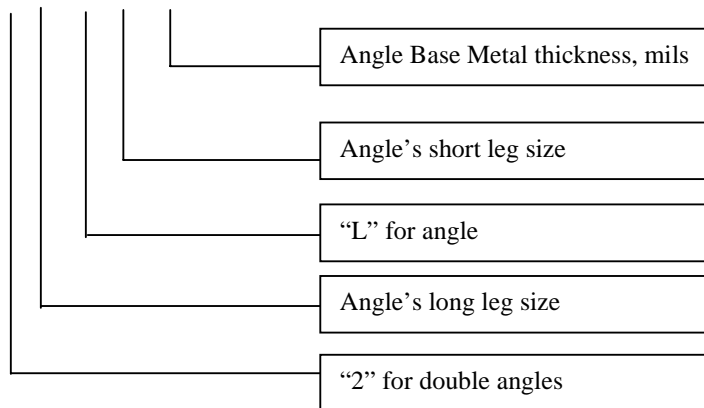
The tables in this document apply to the construction of double L-headers installed in buildings not more than two stories in height with each story not more than 10 feet high. Steel L-headers constructed in accordance with this document shall be limited by the applicability limits of the *Prescriptive Method for Residential Cold-Formed Steel Framing*, second edition, which are reproduced as Table 2 on page 6.

L-Header Identification

The size and thickness of the “L” angle, following the Steel Stud Manufacturers Association (SSMA) identification criteria, identify an L-header. All L-headers designed per this document are based on 33-ksi minimum yield strength. Table 2 provides the physical dimensions of L-headers considered in this document.

Example: A double L-header with 8-inch long leg angle dimension, 1 1/2-inch short leg angle dimension, and 18 gauge (43 mils) base metal thickness is designated as 2-800L150-43:

2-800L150-43



Span Tables

Tables 3 through 18 provide the maximum allowable span for the double L-headers, listed in Table 1, due to gravity loads. Tables 19 through 23 provide the maximum allowable span for the double L-headers due to uplift loads. The uplift span tables provided are applicable for the top floor of a two-story building or for a one-story building. Uplift loads were found negligible for the bottom floor of a two-story building and therefore, no uplift span tables were generated. Furthermore, L-headers constructed in buildings subjected to wind speeds less than 80 mph, exposure A/B are not subject to uplift loads. The span tables were developed based on the following assumptions:

1. Each L-angle is fastened to a minimum of 33 mil top track,
2. A cripple stud is located under each point load, and
3. The L-header fastening schedule is in accordance with Figure 3.

Construction Details

Figures 2 through 4 provide a step by step construction of a typical double L-header.

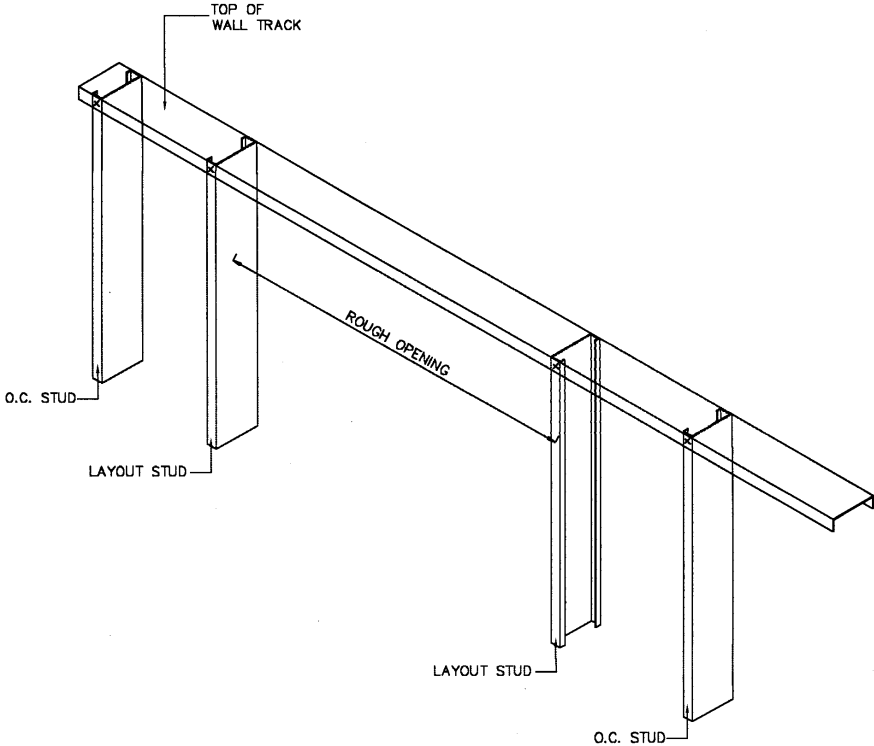


Figure 2
Rough Opening

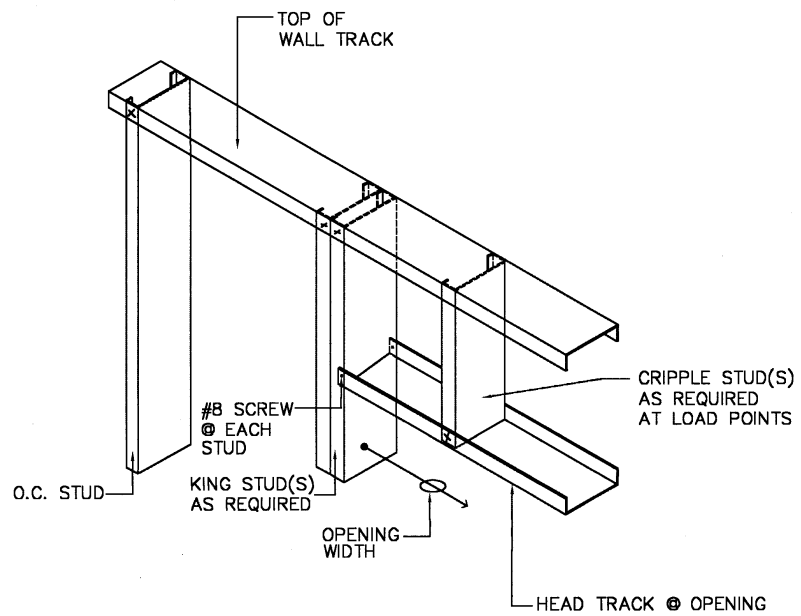


Figure 3
Framing of Rough Opening

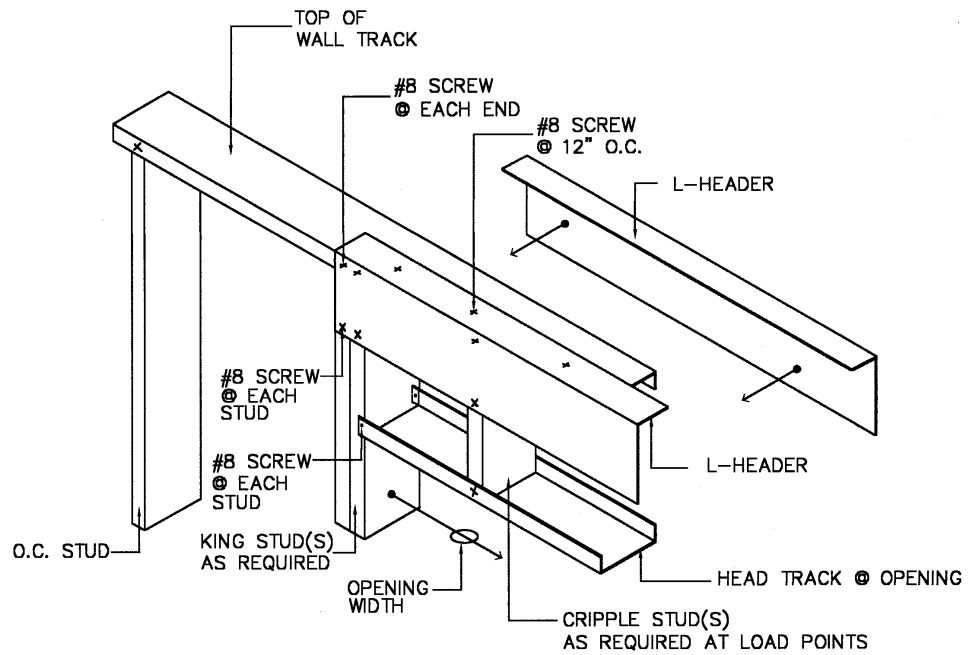


Figure 4
Installation of a Double L-Shaped Header

Table 1
L-Header Dimensions

| L-Header Designation | Long Angle Leg Size (in.) | Short Angle Leg Size (in.) | Angle Thickness | |
|----------------------|---------------------------|----------------------------|-----------------|------|
| | | | Gauge | Mils |
| 600L150-43 | 6 | 1.50 | 18 | 43 |
| 600L150-54 | 6 | 1.50 | 16 | 54 |
| 600L150-68 | 6 | 1.50 | 14 | 68 |
| 800L150-43 | 8 | 1.50 | 18 | 43 |
| 800L150-54 | 8 | 1.50 | 16 | 54 |
| 800L150-68 | 8 | 1.50 | 14 | 68 |
| 1000L150-43 | 10 | 1.50 | 18 | 43 |
| 1000L150-54 | 10 | 1.50 | 16 | 54 |
| 1000L150-68 | 10 | 1.50 | 14 | 68 |

Table 2
Applicability Limits

| ATTRIBUTE | LIMITATION |
|--|---|
| General | |
| Building dimension | Maximum width ¹ is 40 feet (11 m) Maximum length ² is 60 feet (18 m) |
| Number of stories | 2 story |
| Design wind speed | 110 mph maximum (177 km/sec) fastest-mile wind speed [except as noted for header uplift] ³ |
| Wind exposure | Exposures C (open terrain) Exposures A/B (suburban/wooded) |
| Ground snow load | 70 psf (3.35 kN/m ²) maximum ground snow load |
| Seismic zone | Zones 0, 1, and 2 |
| Floors | |
| Floor dead load | 10 psf (0.48 kN/m ²) maximum |
| Floor live load | |
| First floor | 40 psf (1.92 kN/m ²) maximum |
| Second floor (sleeping rooms) | 30 psf (1.44 kN/m ²) maximum |
| Cantilever | 24 inches (610 mm) maximum |
| Walls | |
| Wall dead load | 10 psf (0.48 kN/m ²) maximum |
| Load bearing wall height | 10 feet (3 m) maximum |
| Roofs | |
| Roof dead load | 12 psf (0.48 kN/m ²) maximum total load [7 psf (0.34 kN/m ²) maximum for roof covering only] |
| Roof live load | 70 psf (3.35 kN/m ²) maximum ground snow load |
| Ceiling dead load | 5 psf (0.24 kN/m ²) maximum |
| Roof slope | 3:12 to 12:12 |
| Rake overhang | 12 inches (305 mm) maximum |
| Soffit overhang | 24 inches (610 mm) maximum |
| Attic live load (for attics with storage) | 20 psf (0.96 kN/m ²) maximum |
| Attic live load (for attics without storage) | 10 psf (0.48 kN/m ²) maximum |

¹ Building width is in the direction of horizontal framing members supported by the wall studs.

² Building length is in the direction perpendicular to floor joists, ceiling joists, or roof trusses.

³ Header uplift tables are limited to 110-mph exposure A/B (90-mph exposure C).

Table 3
Double L-Header Span Table—Headers Supporting Roof and Ceiling Only
24-Foot-Wide Building^{1, 2}

| Double L-Header Designation | Ground Snow Load (psf) | | | | | | |
|-----------------------------|------------------------|--------|--------|--------|-------|--------|--------|
| | 16 | 20 | 30 | 40 | 50 | 60 | 70 |
| 2-600L150-43 | 4' 10" | 4' 8" | 4' 4" | 4' 0" | 3' 8" | 3' 5" | 3' 2" |
| 2-600L150-54 | 5' 6" | 5' 4" | 4' 10" | 4' 6" | 4' 2" | 3' 10" | 3' 8" |
| 2-600L150-68 | 6' 3" | 6' 1" | 5' 7" | 5' 1" | 4' 9" | 4' 5" | 4' 2" |
| 2-800L150-43 | 6' 4" | 6' 2" | 5' 4" | 5' 2" | 4' 9" | 4' 5" | 4' 2" |
| 2-800L150-54 | 7' 3" | 6' 11" | 6' 8" | 5' 11" | 5' 5" | 5' 1" | 4' 9" |
| 2-800L150-68 | 8' 2" | 7' 11" | 7' 3" | 6' 8" | 6' 2" | 5' 9" | 5' 5" |
| 2-1000L150-43 | 7' 0" | 6' 9" | 6' 2" | 5' 9" | 5' 3" | 4' 11" | 4' 7" |
| 2-1000L150-54 | 8' 11" | 8' 7" | 7' 0" | 6' 6" | 6' 0" | 5' 7" | 5' 3" |
| 2-1000L150-68 | 10' 1" | 9' 8" | 8' 11" | 7' 4" | 6' 9" | 6' 4" | 5' 11" |

¹ Building width is measured in the direction of horizontal framing members supported by the header.

² Design assumptions:

Roof and ceiling dead load = 12 psf; Attic live load = 10 psf; 2 foot roof overhang

Table 4
Double L-Header Span Table—Headers Supporting Roof and Ceiling Only
28-Foot-Wide Building^{1, 2}

| Double L-Header Designation | Ground Snow Load (psf) | | | | | | |
|-----------------------------|------------------------|--------|--------|--------|--------|--------|--------|
| | 16 | 20 | 30 | 40 | 50 | 60 | 70 |
| 2-600L150-43 | 4' 6" | 4' 4" | 4' 0" | 3' 9" | 3' 5" | 3' 2" | 3' 0" |
| 2-600L150-54 | 5' 2" | 4' 11" | 4' 6" | 4' 2" | 3' 10" | 3' 7" | 3' 5" |
| 2-600L150-68 | 5' 10" | 5' 8" | 5' 2" | 4' 9" | 4' 5" | 4' 1" | 3' 10" |
| 2-800L150-43 | 5' 11" | 5' 8" | 5' 3" | 4' 10" | 4' 6" | 4' 2" | 3' 11" |
| 2-800L150-54 | 6' 9" | 6' 6" | 5' 11" | 5' 6" | 5' 1" | 4' 9" | 4' 5" |
| 2-800L150-68 | 7' 8" | 7' 4" | 6' 9" | 6' 3" | 5' 9" | 5' 4" | 5' 0" |
| 2-1000L150-43 | 6' 7" | 6' 4" | 5' 9" | 5' 4" | 4' 11" | 4' 7" | 4' 4" |
| 2-1000L150-54 | 7' 5" | 7' 2" | 6' 7" | 6' 1" | 5' 7" | 5' 2" | 4' 11" |
| 2-1000L150-68 | 9' 5" | 9' 0" | 7' 5" | 6' 10" | 6' 4" | 5' 11" | 5' 7" |

¹ Building width is measured in the direction of horizontal framing members supported by the header.

² Design assumptions:

Roof and ceiling dead load = 12 psf; Attic live load = 10 psf; 2 foot roof overhang

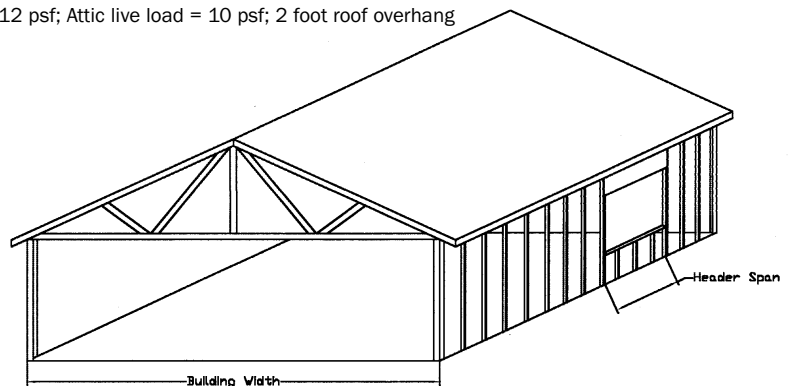


Table 5
Double L-Header Span Table—Headers Supporting Roof and Ceiling Only
30-Foot-Wide Building^{1,2}

| Double L-Header Designation | Ground Snow Load (psf) | | | | | | |
|-----------------------------|------------------------|--------|--------|--------|--------|-------|--------|
| | 16 | 20 | 30 | 40 | 50 | 60 | 70 |
| 2-600L150-43 | 4' 5" | 4' 9" | 3' 11" | 3' 7" | 3' 4" | 3' 1" | 2' 11" |
| 2-600L150-54 | 5' 0" | 4' 11" | 4' 5" | 4' 1" | 3' 9" | 3' 6" | 3' 3" |
| 2-600L150-68 | 5' 8" | 5' 1" | 5' 0" | 4' 8" | 4' 3" | 4' 0" | 3' 9" |
| 2-800L150-43 | 5' 9" | 5' 1" | 5' 1" | 4' 8" | 4' 4" | 4' 0" | 3' 10" |
| 2-800L150-54 | 6' 6" | 6' 3" | 5' 9" | 5' 4" | 4' 11" | 4' 7" | 4' 4" |
| 2-800L150-68 | 7' 5" | 7' 6" | 6' 6" | 6' 1" | 5' 7" | 5' 2" | 4' 11" |
| 2-1000L150-43 | 6' 4" | 6' 5" | 5' 7" | 5' 2" | 4' 9" | 4' 5" | 4' 2" |
| 2-1000L150-54 | 7' 2" | 6' 9" | 6' 4" | 5' 10" | 5' 5" | 5' 1" | 4' 9" |
| 2-1000L150-68 | 9' 1" | 8' 3" | 7' 2" | 6' 8" | 6' 2" | 5' 9" | 5' 5" |

¹ Building width is measured in the direction of horizontal framing members supported by the header.

² Design assumptions:

Roof and ceiling dead load = 12 psf; Attic live load = 10 psf; 2 foot roof overhang

Table 6
Double L-Header Span Table—Headers Supporting Roof and Ceiling Only
32-Foot-Wide Building^{1, 2}

| Double L-Header Designation | Ground Snow Load (psf) | | | | | | |
|-----------------------------|------------------------|--------|--------|--------|-------|--------|--------|
| | 16 | 20 | 30 | 40 | 50 | 60 | 70 |
| 2-600L150-43 | 4' 3" | 4' 1" | 3' 9" | 3' 6" | 3' 3" | 3' 0" | 2' 10" |
| 2-600L150-54 | 4' 10" | 4' 8" | 4' 3" | 3' 11" | 3' 8" | 3' 5" | 3' 2" |
| 2-600L150-68 | 5' 6" | 5' 4" | 4' 10" | 4' 6" | 4' 2" | 3' 10" | 3' 8" |
| 2-800L150-43 | 5' 7" | 5' 4" | 4' 11" | 4' 7" | 4' 3" | 3' 11" | 3' 8" |
| 2-800L150-54 | 6' 4" | 6' 1" | 5' 7" | 5' 2" | 4' 9" | 4' 5" | 4' 2" |
| 2-800L150-68 | 7' 2" | 6' 11" | 6' 4" | 5' 11" | 5' 5" | 5' 1" | 4' 9" |
| 2-1000L150-43 | 6' 2" | 5' 11" | 5' 5" | 5' 1" | 4' 8" | 4' 4" | 4' 1" |
| 2-1000L150-54 | 7' 0" | 6' 8" | 6' 2" | 5' 8" | 5' 3" | 4' 11" | 4' 7" |
| 2-1000L150-68 | 8' 10" | 8' 6" | 7' 0" | 6' 6" | 6' 0" | 5' 7" | 5' 3" |

¹ Building width is measured in the direction of horizontal framing members supported by the header.

² Design assumptions:

Roof and ceiling dead load = 12 psf; Attic live load = 10 psf; 2 foot roof overhang

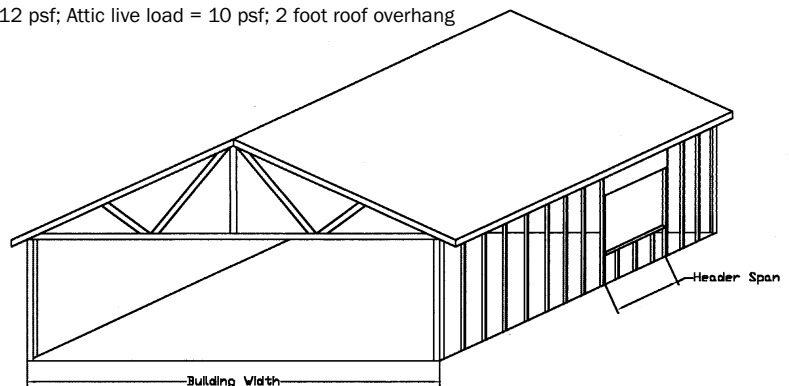


Table 7
Double L-Header Span Table—Headers Supporting Roof and Ceiling Only
34-Foot-Wide Building^{1, 2}

| Double L-Header Designation | Ground Snow Load (psf) | | | | | | |
|-----------------------------|------------------------|--------|--------|--------|--------|--------|-------|
| | 16 | 20 | 30 | 40 | 50 | 60 | 70 |
| 2-600L150-43 | 4' 2" | 4' 0" | 3' 8" | 3' 5" | 3' 2" | 2' 11" | 2' 9" |
| 2-600L150-54 | 4' 8" | 4' 6" | 4' 2" | 3' 10" | 3' 7" | 3' 4" | 3' 1" |
| 2-600L150-68 | 5' 4" | 5' 2" | 4' 9" | 4' 5" | 4' 1" | 3' 9" | 3' 7" |
| 2-800L150-43 | 5' 5" | 5' 3" | 4' 10" | 4' 5" | 4' 1" | 3' 10" | 3' 7" |
| 2-800L150-54 | 6' 2" | 5' 11" | 5' 5" | 5' 0" | 4' 8" | 4' 4" | 4' 1" |
| 2-800L150-68 | 7' 0" | 6' 9" | 6' 2" | 5' 9" | 5' 3" | 5' 11" | 4' 7" |
| 2-1000L150-43 | 6' 0" | 5' 9" | 5' 3" | 4' 11" | 4' 6" | 4' 3" | 4' 0" |
| 2-1000L150-54 | 6' 9" | 6' 6" | 6' 0" | 5' 7" | 5' 1" | 4' 9" | 4' 6" |
| 2-1000L150-68 | 8' 7" | 7' 5" | 6' 9" | 6' 4" | 5' 10" | 5' 5" | 5' 1" |

¹ Building width is measured in the direction of horizontal framing members supported by the header.

² Design assumptions:

Roof and ceiling dead load = 12 psf; Attic live load = 10 psf; 2 foot roof overhang

Table 8
Double L-Header Span Table—Headers Supporting Roof and Ceiling Only
36-Foot-Wide Building^{1, 2}

| Double L-Header Designation | Ground Snow Load (psf) | | | | | | |
|-----------------------------|------------------------|--------|--------|--------|--------|--------|--------|
| | 16 | 20 | 30 | 40 | 50 | 60 | 70 |
| 2-600L150-43 | 4' 0" | 3' 11" | 3' 7" | 3' 4" | 3' 1" | 2' 10" | 2' 8" |
| 2-600L150-54 | 4' 7" | 4' 5" | 4' 0" | 3' 9" | 3' 5" | 3' 3" | 3' 0" |
| 2-600L150-68 | 5' 2" | 5' 0" | 4' 7" | 4' 3" | 3' 11" | 3' 8" | 3' 5" |
| 2-800L150-43 | 5' 3" | 5' 1" | 4' 8" | 4' 4" | 4' 0" | 3' 9" | 3' 6" |
| 2-800L150-54 | 6' 0" | 5' 9" | 5' 3" | 4' 11" | 4' 6" | 4' 3" | 4' 0" |
| 2-800L150-68 | 6' 9" | 6' 6" | 6' 0" | 5' 7" | 5' 2" | 4' 9" | 4' 6" |
| 2-1000L150-43 | 5' 10" | 5' 7" | 5' 2" | 4' 9" | 4' 5" | 4' 1" | 3' 10" |
| 2-1000L150-54 | 6' 7" | 6' 4" | 5' 10" | 5' 5" | 5' 0" | 4' 8" | 4' 4" |
| 2-1000L150-68 | 8' 4" | 7' 2" | 6' 7" | 6' 2" | 5' 8" | 5' 3" | 4' 11" |

¹ Building width is measured in the direction of horizontal framing members supported by the header.

² Design assumptions:

Roof and ceiling dead load = 12 psf; Attic live load = 10 psf; 2 foot roof overhang

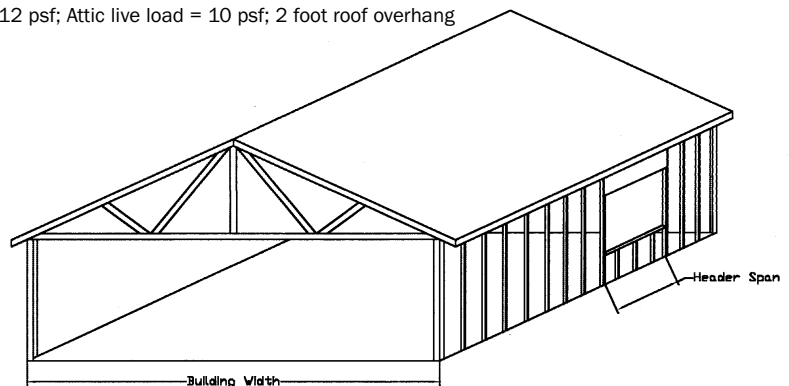


Table 9
Double L-Header Span Table—Headers Supporting Roof and Ceiling Only
38-Foot-Wide Building^{1, 2}

| Double L-Header Designation | Ground Snow Load (psf) | | | | | | |
|-----------------------------|------------------------|--------|--------|-------|--------|-------|--------|
| | 16 | 20 | 30 | 40 | 50 | 60 | 70 |
| 2-600L150-43 | 3' 11" | 3' 9" | 3' 6" | 3' 3" | 3' 0" | 2' 9" | 2' 7" |
| 2-600L150-54 | 4' 5" | 4' 3" | 3' 11" | 3' 8" | 3' 4" | 3' 2" | 2' 11" |
| 2-600L150-68 | 5' 1" | 4' 11" | 4' 6" | 4' 2" | 3' 10" | 3' 7" | 3' 4" |
| 2-800L150-43 | 5' 2" | 4' 11" | 4' 7" | 4' 3" | 4' 0" | 3' 8" | 3' 5" |
| 2-800L150-54 | 5' 10" | 5' 7" | 5' 2" | 4' 9" | 4' 5" | 4' 1" | 3' 10" |
| 2-800L150-68 | 6' 7" | 6' 4" | 5' 10" | 5' 5" | 5' 0" | 4' 8" | 4' 5" |
| 2-1000L150-43 | 5' 8" | 5' 6" | 5' 0" | 4' 8" | 4' 4" | 4' 0" | 3' 9" |
| 2-1000L150-54 | 6' 5" | 6' 2" | 5' 8" | 5' 3" | 4' 11" | 4' 6" | 4' 3" |
| 2-1000L150-68 | 7' 3" | 7' 0" | 6' 5" | 6' 0" | 5' 6" | 5' 2" | 4' 10" |

¹ Building width is measured in the direction of horizontal framing members supported by the header.

² Design assumptions:

Roof and ceiling dead load = 12 psf; Attic live load = 10 psf; 2 foot roof overhang

Table 10
Double L-Header Span Table—Headers Supporting Roof and Ceiling Only
40-Foot-Wide Building^{1, 2}

| Double L-Header Designation | Ground Snow Load (psf) | | | | | | |
|-----------------------------|------------------------|--------|--------|--------|--------|--------|--------|
| | 16 | 20 | 30 | 40 | 50 | 60 | 70 |
| 2-600L150-43 | 3' 10" | 3' 8" | 3' 5" | 3' 2" | 2' 11" | 2' 9" | 2' 7" |
| 2-600L150-54 | 4' 4" | 4' 2" | 3' 10" | 3' 7" | 3' 4" | 3' 1" | 2' 11" |
| 2-600L150-68 | 4' 11" | 4' 9" | 4' 5" | 4' 1" | 3' 9" | 3' 6" | 3' 3" |
| 2-800L150-43 | 5' 0" | 4' 10" | 4' 5" | 4' 2" | 3' 10" | 3' 7" | 3' 4" |
| 2-800L150-54 | 5' 8" | 5' 6" | 5' 0" | 4' 8" | 4' 4" | 4' 0" | 3' 9" |
| 2-800L150-68 | 6' 5" | 6' 3" | 5' 9" | 5' 4" | 4' 11" | 4' 7" | 4' 3" |
| 2-1000L150-43 | 5' 6" | 5' 4" | 5' 11" | 4' 7" | 4' 2" | 3' 11" | 3' 8" |
| 2-1000L150-54 | 6' 3" | 6' 0" | 5' 7" | 5' 2" | 4' 9" | 4' 5" | 4' 2" |
| 2-1000L150-68 | 7' 1" | 6' 10" | 6' 4" | 5' 10" | 5' 5" | 5' 0" | 4' 9" |

¹ Building width is measured in the direction of horizontal framing members supported by the header.

² Design assumptions:

Roof and ceiling dead load = 12 psf; Attic live load = 10 psf; 2 foot roof overhang

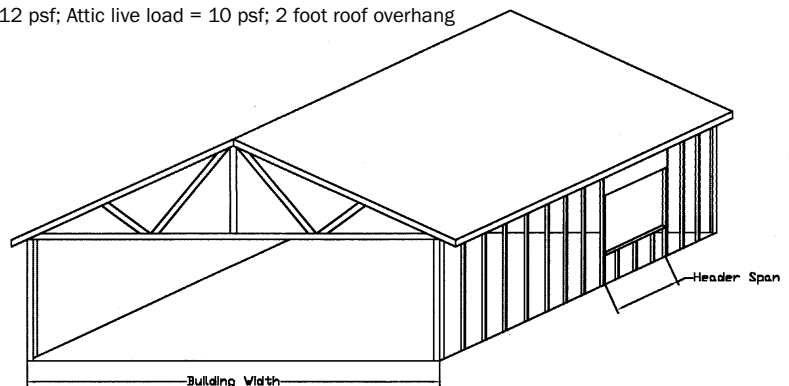


Table 11
Double L-Header Span Table—Headers Supporting One Floor, Roof, and Ceiling
24-Foot-Wide Building^{1, 2}

| Double L-Header Designation | Ground Snow Load (psf) | | | | | | |
|-----------------------------|------------------------|--------|--------|--------|--------|--------|--------|
| | 16 | 20 | 30 | 40 | 50 | 60 | 70 |
| 2-600L150-43 | 3' 3" | 3' 2" | 3' 0" | 2' 11" | 2' 10" | 2' 9" | 2' 8" |
| 2-600L150-54 | 3' 8" | 3' 7" | 3' 5" | 3' 4" | 3' 2" | 3' 1" | 3' 0" |
| 2-600L150-68 | 4' 2" | 4' 1" | 3' 11" | 3' 9" | 3' 8" | 3' 6" | 3' 5" |
| 2-800L150-43 | 4' 3" | 4' 2" | 4' 0" | 3' 10" | 3' 8" | 3' 7" | 3' 6" |
| 2-800L150-54 | 4' 9" | 4' 8" | 4' 6" | 4' 4" | 4' 2" | 4' 1" | 3' 11" |
| 2-800L150-68 | 5' 5" | 5' 4" | 5' 1" | 4' 11" | 4' 9" | 4' 7" | 4' 6" |
| 2-1000L150-43 | 4' 8" | 4' 7" | 4' 5" | 4' 3" | 4' 1" | 3' 11" | 3' 10" |
| 2-1000L150-54 | 5' 3" | 5' 2" | 5' 0" | 4' 9" | 4' 7" | 4' 6" | 4' 4" |
| 2-1000L150-68 | 6' 0" | 5' 10" | 5' 8" | 5' 5" | 5' 3" | 5' 1" | 4' 11" |

¹ Building width is measured in the direction of horizontal framing members supported by the header.

² Design assumptions:

Roof and ceiling dead load = 12 psf; Attic live load = 10 psf; Floor live load = 30 psf; Floor dead load = 10 psf; 2 foot roof overhang

Table 12
Double L-Header Span Table—Headers Supporting One Floor, Roof, and Ceiling
28-Foot-Wide Building^{1, 2}

| Double L-Header Designation | Ground Snow Load (psf) | | | | | | |
|-----------------------------|------------------------|--------|--------|--------|--------|--------|--------|
| | 16 | 20 | 30 | 40 | 50 | 60 | 70 |
| 2-600L150-43 | 3' 0" | 3' 0" | 2' 10" | 2' 9" | 2' 8" | 2' 7" | 2' 6" |
| 2-600L150-54 | 3' 5" | 3' 4" | 3' 3" | 3' 1" | 3' 0" | 2' 11" | 2' 10" |
| 2-600L150-68 | 3' 11" | 3' 10" | 3' 8" | 3' 6" | 3' 5" | 3' 4" | 3' 2" |
| 2-800L150-43 | 3' 11" | 3' 10" | 3' 9" | 3' 7" | 3' 5" | 3' 4" | 3' 3" |
| 2-800L150-54 | 4' 6" | 4' 5" | 4' 3" | 4' 1" | 3' 11" | 3' 9" | 3' 8" |
| 2-800L150-68 | 5' 1" | 5' 0" | 4' 9" | 4' 7" | 4' 5" | 4' 4" | 4' 2" |
| 2-1000L150-43 | 4' 4" | 4' 3" | 4' 1" | 3' 11" | 3' 10" | 3' 8" | 3' 7" |
| 2-1000L150-54 | 4' 11" | 4' 10" | 4' 8" | 4' 6" | 4' 4" | 4' 2" | 4' 1" |
| 2-1000L150-68 | 5' 7" | 5' 6" | 5' 3" | 5' 1" | 4' 11" | 4' 9" | 4' 7" |

¹ Building width is measured in the direction of horizontal framing members supported by the header.

² Design assumptions:

Roof and ceiling dead load = 12 psf; Attic live load = 10 psf; Floor live load = 30 psf; Floor dead load = 10 psf; 2 foot roof overhang

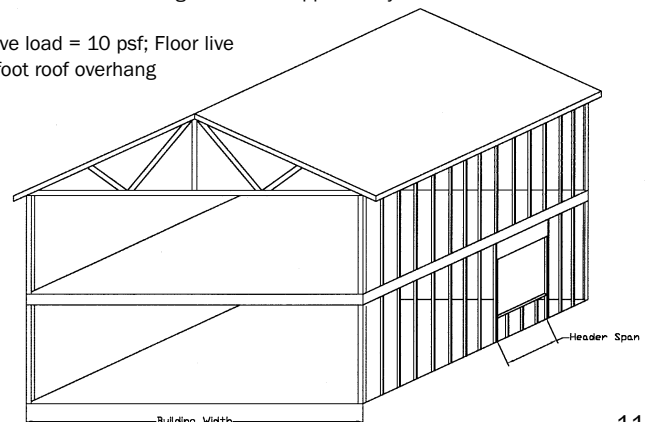


Table 13
Double L-Header Span Table—Headers Supporting One Floor, Roof, and Ceiling
30-Foot-Wide Building^{1, 2}

| Double L-Header Designation | Ground Snow Load (psf) | | | | | | |
|-----------------------------|------------------------|--------|-------|--------|--------|--------|--------|
| | 16 | 20 | 30 | 40 | 50 | 60 | 70 |
| 2-600L150-43 | 2' 11" | 2' 10" | 2' 9" | 2' 8" | 2' 7" | 2' 6" | 2' 5" |
| 2-600L150-54 | 3' 4" | 3' 3" | 3' 1" | 3' 0" | 2' 11" | 2' 10" | 2' 9" |
| 2-600L150-68 | 3' 9" | 3' 8" | 3' 7" | 3' 5" | 3' 4" | 3' 2" | 3' 1" |
| 2-800L150-43 | 3' 10" | 3' 9" | 3' 7" | 3' 6" | 3' 4" | 3' 3" | 3' 2" |
| 2-800L150-54 | 4' 4" | 4' 3" | 4' 1" | 3' 11" | 3' 10" | 3' 8" | 3' 7" |
| 2-800L150-68 | 4' 11" | 4' 10" | 4' 8" | 4' 6" | 4' 4" | 4' 2" | 4' 1" |
| 2-1000L150-43 | 4' 3" | 4' 2" | 4' 0" | 3' 10" | 3' 8" | 3' 7" | 3' 6" |
| 2-1000L150-54 | 4' 9" | 4' 8" | 4' 6" | 4' 4" | 4' 2" | 4' 1" | 3' 11" |
| 2-1000L150-68 | 5' 5" | 5' 4" | 5' 1" | 4' 11" | 4' 9" | 4' 7" | 4' 5" |

¹ Building width is measured in the direction of horizontal framing members supported by the header.

² Design assumptions:

Roof and ceiling dead load = 12 psf; Attic live load = 10 psf; Floor live load = 30 psf; Floor dead load = 10 psf; 2 foot roof overhang

Table 14
Double L-Header Span Table—Headers Supporting One Floor, Roof, and Ceiling
32-Foot-Wide Building^{1, 2}

| Double L-Header Designation | Ground Snow Load (psf) | | | | | | |
|-----------------------------|------------------------|-------|--------|--------|--------|--------|--------|
| | 16 | 20 | 30 | 40 | 50 | 60 | 70 |
| 2-600L150-43 | 2' 10" | 2' 9" | 2' 8" | 2' 7" | 2' 6" | 2' 5" | 2' 4" |
| 2-600L150-54 | 3' 3" | 3' 2" | 3' 0" | 2' 11" | 2' 10" | 2' 9" | 2' 8" |
| 2-600L150-68 | 3' 8" | 3' 7" | 3' 5" | 3' 4" | 3' 3" | 3' 1" | 3' 0" |
| 2-800L150-43 | 3' 9" | 3' 8" | 3' 6" | 3' 4" | 3' 3" | 3' 2" | 3' 1" |
| 2-800L150-54 | 4' 2" | 4' 2" | 4' 0" | 3' 10" | 3' 8" | 3' 7" | 3' 6" |
| 2-800L150-68 | 4' 9" | 4' 8" | 4' 6" | 4' 4" | 4' 2" | 4' 1" | 3' 11" |
| 2-1000L150-43 | 4' 1" | 4' 0" | 3' 10" | 3' 9" | 3' 7" | 3' 6" | 3' 4" |
| 2-1000L150-54 | 4' 8" | 4' 7" | 4' 4" | 4' 3" | 4' 1" | 3' 11" | 3' 10" |
| 2-1000L150-68 | 5' 3" | 5' 2" | 4' 11" | 4' 9" | 4' 7" | 4' 6" | 4' 4" |

¹ Building width is measured in the direction of horizontal framing members supported by the header.

² Design assumptions:

Roof and ceiling dead load = 12 psf; Attic live load = 10 psf; Floor live load = 30 psf; Floor dead load = 10 psf; 2 foot roof overhang

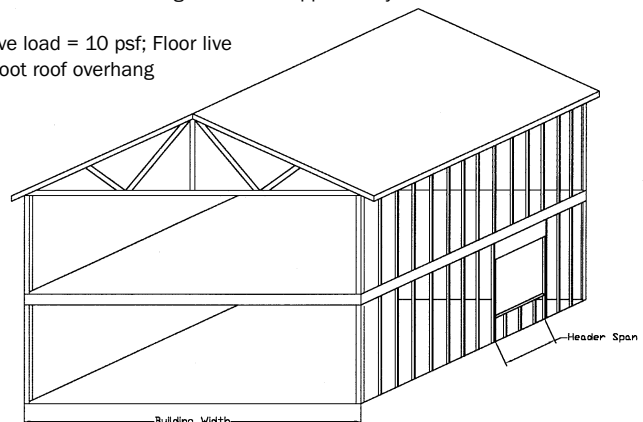


Table 15
Double L-Header Span Table—Headers Supporting One Floor, Roof, and Ceiling
34-Foot-Wide Building^{1, 2}

| Double L-Header Designation | Ground Snow Load (psf) | | | | | | |
|-----------------------------|------------------------|--------|--------|--------|--------|--------|--------|
| | 16 | 20 | 30 | 40 | 50 | 60 | 70 |
| 2-600L150-43 | 2' 9" | 2' 9" | 2' 7" | 2' 6" | 2' 5" | 2' 4" | 2' 3" |
| 2-600L150-54 | 3' 1" | 3' 1" | 2' 11" | 2' 10" | 2' 9" | 2' 8" | 2' 7" |
| 2-600L150-68 | 3' 7" | 3' 6" | 3' 4" | 3' 3" | 3' 2" | 3' 0" | 2' 11" |
| 2-800L150-43 | 3' 7" | 3' 7" | 3' 5" | 3' 3" | 3' 2" | 3' 1" | 3' 0" |
| 2-800L150-54 | 4' 1" | 4' 0" | 3' 10" | 3' 9" | 3' 7" | 3' 6" | 3' 4" |
| 2-800L150-68 | 4' 8" | 4' 7" | 4' 5" | 4' 3" | 4' 1" | 3' 11" | 3' 10" |
| 2-1000L150-43 | 4' 0" | 3' 11" | 3' 9" | 3' 7" | 3' 6" | 3' 5" | 3' 3" |
| 2-1000L150-54 | 4' 6" | 4' 5" | 4' 3" | 4' 1" | 3' 11" | 3' 10" | 3' 9" |
| 2-1000L150-68 | 5' 1" | 5' 0" | 4' 10" | 4' 8" | 4' 6" | 4' 4" | 4' 3" |

¹ Building width is measured in the direction of horizontal framing members supported by the header.

² Design assumptions:

Roof and ceiling dead load = 12 psf; Attic live load = 10 psf; Floor live load = 30 psf; Floor dead load = 10 psf; 2 foot roof overhang

Table 16
Double L-Header Span Table—Headers Supporting One Floor, Roof, and Ceiling
36-Foot-Wide Building^{1, 2}

| Double L-Header Designation | Ground Snow Load (psf) | | | | | | |
|-----------------------------|------------------------|--------|--------|-------|--------|--------|--------|
| | 16 | 20 | 30 | 40 | 50 | 60 | 70 |
| 2-600L150-43 | 2' 8" | 2' 8" | 2' 6" | 2' 5" | 2' 4" | 2' 3" | 2' 3" |
| 2-600L150-54 | 3' 1" | 3' 0" | 2' 10" | 2' 9" | 2' 8" | 2' 7" | 2' 6" |
| 2-600L150-68 | 3' 6" | 3' 5" | 3' 3" | 3' 2" | 3' 1" | 2' 11" | 2' 10" |
| 2-800L150-43 | 3' 6" | 3' 5" | 3' 4" | 3' 2" | 3' 1" | 3' 0" | 2' 11" |
| 2-800L150-54 | 4' 0" | 3' 11" | 3' 9" | 3' 7" | 3' 6" | 3' 5" | 3' 3" |
| 2-800L150-68 | 4' 6" | 4' 5" | 4' 3" | 4' 1" | 4' 0" | 3' 10" | 3' 9" |
| 2-1000L150-43 | 3' 11" | 3' 10" | 3' 8" | 3' 6" | 3' 5" | 3' 4" | 3' 2" |
| 2-1000L150-54 | 4' 5" | 4' 4" | 4' 2" | 4' 0" | 3' 10" | 3' 9" | 3' 7" |
| 2-1000L150-68 | 5' 0" | 4' 11" | 4' 8" | 4' 6" | 4' 4" | 4' 3" | 4' 1" |

¹ Building width is measured in the direction of horizontal framing members supported by the header.

² Design assumptions:

Roof and ceiling dead load = 12 psf; Attic live load = 10 psf; Floor live load = 30 psf; Floor dead load = 10 psf; 2 foot roof overhang

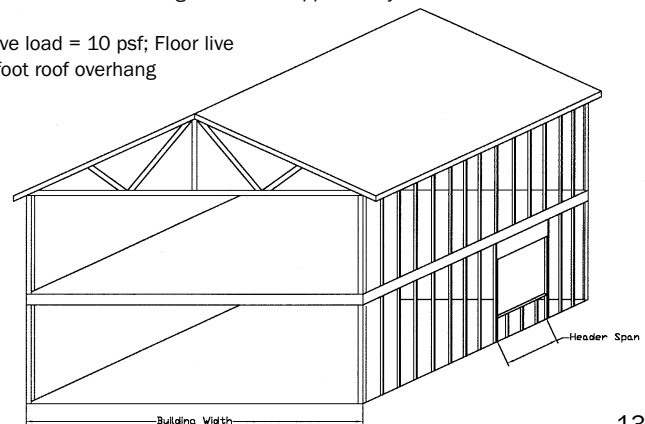


Table 17
Double L-Header Span Table—Headers Supporting One Floor, Roof and Ceiling
38-Foot-Wide Building^{1, 2}

| Double L-Header Designation | Ground Snow Load (psf) | | | | | | |
|-----------------------------|------------------------|--------|--------|--------|--------|--------|--------|
| | 16 | 20 | 30 | 40 | 50 | 60 | 70 |
| 2-600L150-43 | 2' 8" | 2' 7" | 2' 6" | 2' 5" | 2' 4" | 2' 3" | 2' 2" |
| 2-600L150-54 | 3' 0" | 2' 11" | 2' 10" | 2' 8" | 2' 7" | 2' 6" | 2' 5" |
| 2-600L150-68 | 3' 5" | 3' 4" | 3' 2" | 3' 1" | 3' 0" | 2' 11" | 2' 9" |
| 2-800L150-43 | 3' 5" | 3' 4" | 3' 3" | 3' 1" | 3' 0" | 2' 11" | 2' 10" |
| 2-800L150-54 | 3' 11" | 3' 10" | 3' 8" | 3' 6" | 3' 5" | 3' 4" | 3' 2" |
| 2-800L150-68 | 4' 5" | 4' 4" | 4' 2" | 4' 0" | 3' 11" | 3' 9" | 3' 8" |
| 2-1000L150-43 | 3' 9" | 3' 9" | 3' 7" | 3' 5" | 3' 4" | 3' 3" | 3' 1" |
| 2-1000L150-54 | 4' 3" | 4' 3" | 4' 1" | 3' 11" | 3' 9" | 3' 8" | 3' 6" |
| 2-1000L150-68 | 4' 10" | 4' 9" | 4' 7" | 4' 5" | 4' 3" | 4' 2" | 4' 0" |

¹ Building width is measured in the direction of horizontal framing members supported by the header.

² Design assumptions:

Roof and ceiling dead load = 12 psf; Attic live load = 10 psf; Floor live load = 30 psf; Floor dead load = 10 psf; 2 foot roof overhang

Table 18
Double L-Header Span Table—Headers Supporting One Floor, Roof and Ceiling
40-Foot-Wide Building^{1, 2}

| Double L-Header Designation | Ground Snow Load (psf) | | | | | | |
|-----------------------------|------------------------|--------|--------|--------|--------|--------|--------|
| | 16 | 20 | 30 | 40 | 50 | 60 | 70 |
| 2-600L150-43 | 2' 7" | 2' 6" | 2' 5" | 2' 4" | 2' 3" | 2' 2" | 2' 1" |
| 2-600L150-54 | 2' 11" | 2' 10" | 2' 9" | 2' 8" | 2' 7" | 2' 6" | 2' 5" |
| 2-600L150-68 | 3' 4" | 3' 3" | 3' 1" | 3' 0" | 2' 11" | 2' 10" | 2' 9" |
| 2-800L150-43 | 3' 4" | 3' 4" | 3' 2" | 3' 1" | 2' 11" | 2' 10" | 2' 9" |
| 2-800L150-54 | 3' 10" | 3' 9" | 3' 7" | 3' 5" | 3' 4" | 3' 3" | 3' 2" |
| 2-800L150-68 | 4' 4" | 4' 3" | 4' 1" | 3' 11" | 3' 9" | 3' 8" | 3' 7" |
| 2-1000L150-43 | 3' 8" | 3' 8" | 3' 6" | 3' 4" | 3' 3" | 3' 2" | 3' 1" |
| 2-1000L150-54 | 4' 2" | 4' 1" | 3' 11" | 3' 10" | 3' 8" | 3' 7" | 3' 5" |
| 2-1000L150-68 | 4' 9" | 4' 8" | 4' 6" | 4' 4" | 4' 2" | 4' 0" | 3' 11" |

¹ Building width is measured in the direction of horizontal framing members supported by the header.

² Design assumptions:

Roof and ceiling dead load = 12 psf; Attic live load = 10 psf; Floor live load = 30 psf; Floor dead load = 10 psf; 2 foot roof overhang

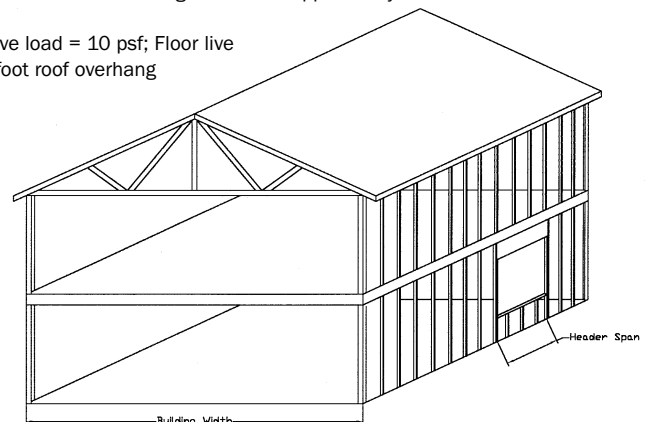


Table 19
Double L-Header Uplift Span Table
Headers Supporting Roof and Ceiling Only
24-Foot-Wide Building^{1, 2}

| Double L-Header Designation | Wind Speed ⁴ (mph) and Exposure | | | |
|-----------------------------|--|----------------|-----------------|-----------------|
| | 80 A/B ³ Seismic Zones 0, 1, & 2 | 90 A/B 70 C | 100 A/B 80 C | 110 A/B 90 C |
| 2-600L150-43 | No Uplift | 7' 3" | 4' 11" | 3' 9" |
| 2-600L150-54 | No Uplift | 8' 3" | 5' 7" | 4' 3" |
| 2-600L150-68 | No Uplift | 9' 5" | 6' 4" | 4' 10" |
| 2-800L150-43 | No Uplift | 8' 6" | 5' 9" | 4' 4" |
| 2-800L150-54 | No Uplift | 10' 9" | 7' 3" | 5' 6" |
| 2-800L150-68 | No Uplift | 12' 3" | 8' 3" | 6' 3" |
| 2-1000L150-43 | No Uplift | 10' 6" | 7' 1" | 5' 5" |
| 2-1000L150-54 | No Uplift | 10' 3" | 6' 11" | 5' 3" |
| 2-1000L150-68 | No Uplift | 15' 1" | 10' 2" | 7' 9" |

1 Building width is measured in the direction of horizontal framing members supported by the header.

2 Design assumptions:

Roof and ceiling dead load = 12 psf; Attic live load = 10 psf; 2 foot roof overhang.

3 No uplift loads acting on building for wind speeds up to 80 mph, exposure A/B.

4 Wind speeds are based on fastest mile measurements. When using wind speed maps based on 3 second gust wind speeds, the fastest mile wind speed should be multiplied by a conversion factor of 1.2.

Table 20
Double L-Header Uplift Span Table
Headers Supporting Roof and Ceiling Only
28-Foot-Wide Building^{1, 2}

| Double L-Header Designation | Wind Speed ⁴ (mph) and Exposure | | | |
|-----------------------------|--|----------------|-----------------|-----------------|
| | 80 A/B ³ Seismic Zones 0, 1, & 2 | 90 A/B 70 C | 100 A/B 80 C | 110 A/B 90 C |
| 2-600L150-43 | No Uplift | 6' 10" | 4' 8" | 3' 6" |
| 2-600L150-54 | No Uplift | 7' 9" | 5' 3" | 4' 0" |
| 2-600L150-68 | No Uplift | 8' 10" | 6' 0" | 4' 6" |
| 2-800L150-43 | No Uplift | 9' 0" | 6' 1" | 4' 7" |
| 2-800L150-54 | No Uplift | 10' 2" | 6' 11" | 5' 3" |
| 2-800L150-68 | No Uplift | 11' 7" | 7' 10" | 5' 11" |
| 2-1000L150-43 | No Uplift | 11' 1" | 7' 6" | 5' 8" |
| 2-1000L150-54 | No Uplift | 9' 8" | 6' 7" | 5' 0" |
| 2-1000L150-68 | No Uplift | 14' 2" | 9' 8" | 7' 3" |

1 Building width is measured in the direction of horizontal framing members supported by the header.

2 Design assumptions:

Roof and ceiling dead load = 12 psf; Attic live load = 10 psf; 2 foot roof overhang.

3 No uplift loads acting on building for wind speeds up to 80 mph, exposure A/B.

4 Wind speeds are based on fastest mile measurements. When using wind speed maps based on 3 second gust wind speeds, the fastest mile wind speed should be multiplied by a conversion factor of 1.2.

Table 21
Double L-Header Uplift Span Table
Headers Supporting Roof and Ceiling Only
32-Foot-Wide Building^{1, 2}

| Double L-Header Designation | Wind Speed ⁴ (mph) and Exposure | | | |
|-----------------------------|--|----------------|-----------------|-----------------|
| | 80 A/B ³ Seismic Zones 0, 1, & 2 | 90 A/B 70 C | 100 A/B 80 C | 110 A/B 90 C |
| 2-600L150-43 | No Uplift | 6' 6" | 4' 5" | 3' 4" |
| 2-600L150-54 | No Uplift | 7' 5" | 5' 0" | 3' 10" |
| 2-600L150-68 | No Uplift | 8' 5" | 5' 9" | 4' 4" |
| 2-800L150-43 | No Uplift | 8' 6" | 5' 10" | 4' 5" |
| 2-800L150-54 | No Uplift | 9' 8" | 6' 7" | 5' 0" |
| 2-800L150-68 | No Uplift | 11' 0" | 7' 6" | 5' 8" |
| 2-1000L150-43 | No Uplift | 10' 6" | 7' 2" | 5' 5" |
| 2-1000L150-54 | No Uplift | 9' 3" | 6' 3" | 4' 9" |
| 2-1000L150-68 | No Uplift | 13' 6" | 9' 2" | 6' 11" |

1 Building width is measured in the direction of horizontal framing members supported by the header.

2 Design assumptions:

Roof and ceiling dead load = 12 psf; Attic live load = 10 psf; 2 foot roof overhang.

3 No uplift loads acting on building for wind speeds up to 80 mph, exposure A/B.

4 Wind speeds are based on fastest mile measurements. When using wind speed maps based on 3 second gust wind speeds, the fastest mile wind speed should be multiplied by a conversion factor of 1.2.

Table 22
Double L-Header Uplift Span Table
Headers Supporting Roof and Ceiling Only
36-Foot-Wide Building^{1, 2}

| Double L-Header Designation | Wind Speed ⁴ (mph) and Exposure | | | |
|-----------------------------|--|----------------|-----------------|-----------------|
| | 80 A/B ³ Seismic Zones 0, 1, & 2 | 90 A/B 70 C | 100 A/B 80 C | 110 A/B 90 C |
| 2-600L150-43 | No Uplift | 6' 3" | 4' 2" | 3' 3" |
| 2-600L150-54 | No Uplift | 7' 0" | 4' 9" | 3' 8" |
| 2-600L150-68 | No Uplift | 8' 0" | 5' 4" | 4' 2" |
| 2-800L150-43 | No Uplift | 8' 2" | 5' 5" | 4' 3" |
| 2-800L150-54 | No Uplift | 9' 3" | 6' 2" | 4' 10" |
| 2-800L150-68 | No Uplift | 10' 6" | 7' 0" | 5' 6" |
| 2-1000L150-43 | No Uplift | 10' 0" | 6' 9" | 5' 3" |
| 2-1000L150-54 | No Uplift | 8' 10" | 5' 11" | 4' 7" |
| 2-1000L150-68 | No Uplift | 12' 11" | 8' 7" | 6' 9" |

1 Building width is measured in the direction of horizontal framing members supported by the header.

2 Design assumptions:

Roof and ceiling dead load = 12 psf; Attic live load = 10 psf; 2 foot roof overhang.

3 No uplift loads acting on building for wind speeds up to 80 mph, exposure A/B.

4 Wind speeds are based on fastest mile measurements. When using wind speed maps based on 3 second gust wind speeds, the fastest mile wind speed should be multiplied by a conversion factor of 1.2.

Table 23
Double L-Header Uplift Span Table
Headers Supporting Roof and Ceiling Only
40-Foot-Wide Building^{1, 2}

| Double L-Header Designation | Wind Speed ⁴ (mph) and Exposure | | | |
|-----------------------------|--|----------------|-----------------|-----------------|
| | 80 A/B ³ Seismic Zones 0, 1, & 2 | 90 A/B 70 C | 100 A/B 80 C | 110 A/B 90 C |
| 2-600L150-43 | No Uplift | 6' 0" | 4' 0" | 3' 0" |
| 2-600L150-54 | No Uplift | 6' 9" | 4' 6" | 3' 5" |
| 2-600L150-68 | No Uplift | 7' 8" | 5' 2" | 3' 11" |
| 2-800L150-43 | No Uplift | 7' 10" | 5' 3" | 4' 0" |
| 2-800L150-54 | No Uplift | 8' 10" | 5' 11" | 4' 6" |
| 2-800L150-68 | No Uplift | 10' 0" | 6' 9" | 5' 1" |
| 2-1000L150-43 | No Uplift | 9' 7" | 6' 6" | 4' 11" |
| 2-1000L150-54 | No Uplift | 8' 5" | 5' 8" | 4' 4" |
| 2-1000L150-68 | No Uplift | 12' 4" | 8' 4" | 6' 3" |

1 Building width is measured in the direction of horizontal framing members supported by the header.

2 Design assumptions:

Roof and ceiling dead load = 12 psf; Attic live load = 10 psf; 2 foot roof overhang.

3 No uplift loads acting on building for wind speeds up to 80 mph, exposure A/B.

4 Wind speeds are based on fastest mile measurements. When using wind speed maps based on 3 second gust wind speeds, the fastest mile wind speed should be multiplied by a conversion factor of 1.2.

References

- *L Shaped Header Testing, Evaluation, & Design Guidance*, National Association of Home Builders Research Center, Upper Marlboro, MD, 1998
- *L-Header Beam Design Guide*, LaBoube, R., University of Missouri, Rolla, Department of Civil Engineering, Rolla, MO, 1999
- *Specification for the Design of Cold Formed Steel Structural Members*, American Iron and Steel Institute (AISI), Washington, DC, 1996
- *Prescriptive Method for Residential Cold Formed Steel Framing, Second Edition*, American Iron and Steel Institute (AISI), Washington, DC, 1997



North American Steel Framing Alliance

1726 M Street, NW

Suite 601

Washington, DC 20036-4523

202-785-2022

Fax: 202-785-3856

1-800-79-STEEL

www.SteelFramingAlliance.com